

LIVESTOCK PRODUCTS

AUSTRALIA

EMBARGO: 11.30AM (CANBERRA TIME) FRI 13 NOV 2009

KEY FIGURES

TREND ESTIMATES	Sep Qtr 2008 '000	Jun Qtr 2009 '000	Sep Qtr 2009 '000
Number slaughtered			
Cattle (excl. calves)	2 010	1 969	1 983
Calves	203	199	196
Sheep	3 050	2 629	2 534
Lambs	5 053	5 305	5 313
Pigs	1 173	1 125	1 135
Chickens	116 522	118 512	116 599

	Sep Qtr 2008 tonnes	Jun Qtr 2009 tonnes	Sep Qtr 2009 tonnes
Meat produced			
Beef	538 626	531 920	536 683
Veal	6 545	7 815	8 336
Mutton	64 193	55 141	53 783
Lamb	101 893	109 579	110 254
Pig meat	83 969	80 960	81 944
Chicken meat	203 648	208 486	207 071
Wool receivals	94 958	88 660	86 168

	Jun Qtr 2008 ML	Mar Qtr 2009 ML	Jun Qtr 2009 ML
Whole milk intake by factories	2 344	2 343	2 349

KEY POINTS

- In the September quarter 2009, the trend estimate for sheep slaughterings decreased 4% to 2.5 million.
- The trend estimate for wool receivals by brokers and dealers decreased 3% to 86 thousand tonnes.

INQUIRIES

For further information about these and related statistics, contact the National Information and Referral Service on 1300 135 070.

NOTES

FORTHCOMING ISSUES

ISSUE (Quarter)

RELEASE DATE

December 2009

12 February 2010

.....

INTRODUCTION

This publication presents statistics on livestock slaughterings (including chickens), meat production, whole milk intake by factories, market milk sales by factories, receivals of taxable wool by wool brokers and dealers, exports of live sheep and cattle and exports of fresh, chilled, frozen and processed meat. It also includes seasonally adjusted and trend totals for numbers slaughtered, meat produced, whole milk intake and wool receivals. More detailed information can be obtained by contacting the Australian Bureau of Statistics (ABS) or by referring to the monthly ABS publication *Livestock and Meat, Australia* (cat. no. 7218.0.55.001).

.....

ABBREVIATIONS

'000 thousand

ABS Australian Bureau of Statistics

ML megalitre

t tonne

UHT ultra heat treated

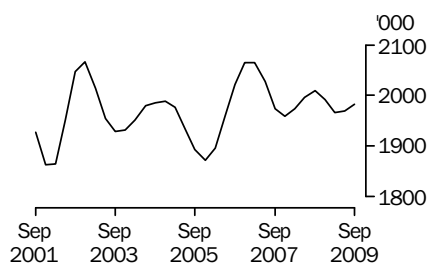
°C degrees Celsius

Brian Pink

Australian Statistician

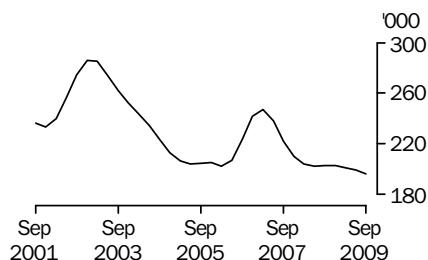
LIVESTOCK SLAUGHTERED TREND

CATTLE (EXCLUDING CALVES)



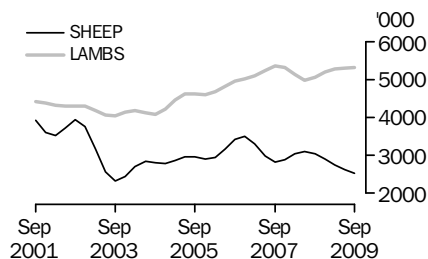
The number of cattle (excluding calves) slaughtered in the September quarter 2009, decreased 1% to 2.0 million, compared to the September quarter 2008.

CALVES



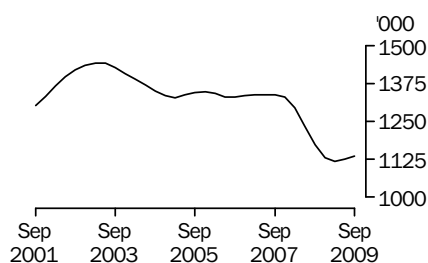
The number of calves slaughtered in the September quarter 2009 decreased 3% to 196 thousand, compared to the September quarter 2008.

SHEEP AND LAMBS



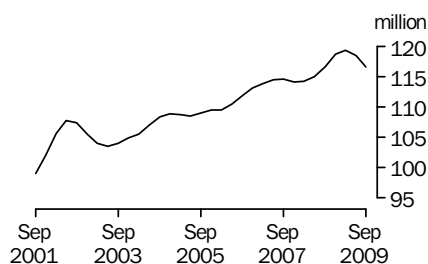
In the September quarter 2009, the number of sheep slaughtered fell 17% to 2.5 million, compared to the same period in 2008, while lamb slaughterings increased 5% to 5.3 million.

PIGS



Pig slaughterings in the September quarter 2009 decreased 3% to 1.1 million, compared to the same quarter of the previous year.

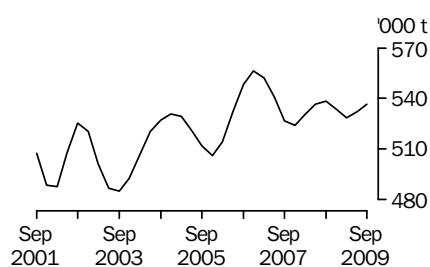
CHICKENS



Chicken slaughterings in the September quarter 2009 increased by less than 1% to 116.6 million, compared to the September quarter in 2008.

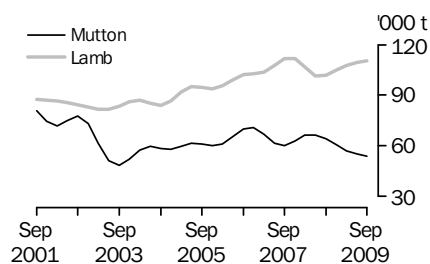
MEAT PRODUCTION TREND

BEEF



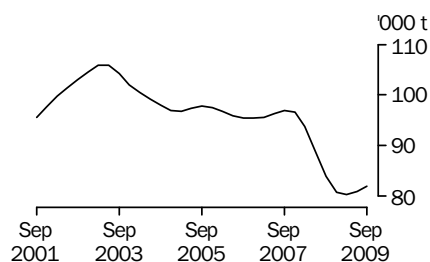
In the September quarter 2009, beef production increased 1% to 537 thousand tonnes, compared to June quarter 2009.

MUTTON AND LAMB



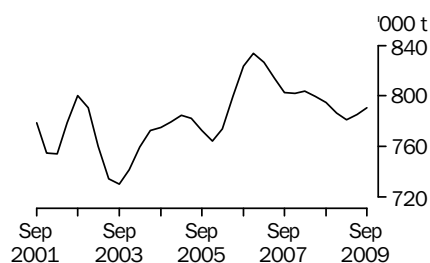
While mutton production in the September quarter 2009 decreased 16% to 54 thousand tonnes, compared to the September quarter of the previous year, lamb production increased 8% to 110 thousand tonnes in the same period.

PIG MEAT



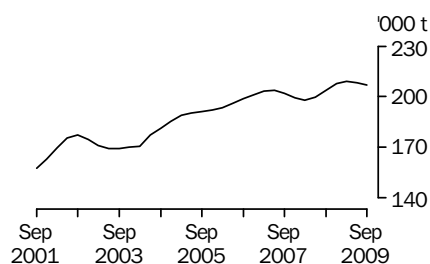
Pig meat production in the September quarter 2009 decreased 2% to 82 thousand tonnes, compared to the same quarter in 2008.

TOTAL RED MEAT



Total red meat production increased 1% to 791 thousand tonnes in the September quarter 2009, compared to the June quarter 2009.

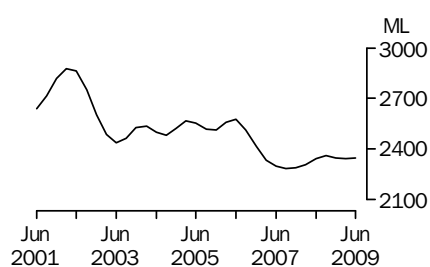
CHICKEN MEAT



Chicken meat production in the September quarter 2009, increased 2% to 207 thousand tonnes, compared to the same quarter of the previous year.

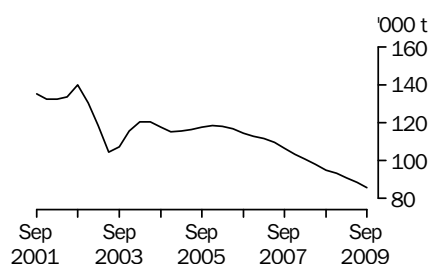
LIVESTOCK PRODUCTS TREND

WHOLE MILK INTAKE BY FACTORIES



Whole milk intake by factories in the June quarter 2009 increased by less than 1% to 2,349 megalitres, compared to the June quarter 2008.

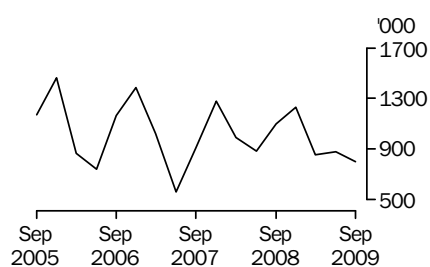
BROKERS AND DEALERS RECEIVALS OF TAXABLE WOOL



Wool receipts by brokers and dealers in the September quarter 2009 decreased 10% to 86 thousand tonnes, compared to the same quarter of the previous year.

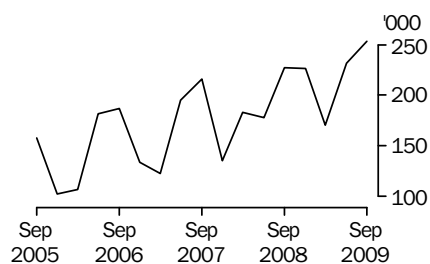
LIVESTOCK EXPORTS ORIGINAL

EXPORTS OF LIVE SHEEP



Live sheep exports in the September quarter 2009 decreased 27% to 802 thousand, compared to the September 2008 quarter. Gross value decreased 11% to \$76.8 million, while unit value increased 22% to \$95.82 during the same period.

EXPORTS OF LIVE CATTLE



Exports of live cattle in the September quarter 2009 increased 12% to 253 thousand, compared to the same period in the previous year. Gross value increased 14% to \$160.0 million, and unit value increased 2% to \$631.50 during the same period.

LIST OF TABLES AND GRAPHS

page

OVERVIEW

1	Livestock slaughtered, Australia	8
2	Livestock products, Australia	9

EXPORTS OF MEAT AND LIVE ANIMALS

3	Exports of fresh, chilled, frozen and processed meat, Australia	10
4	Exports of live sheep and cattle, Australia	11

LIVESTOCK PRODUCTS

5	Whole milk intake by factories, by state	12
6	Market milk sales by factories, by state	13
7	Brokers and dealers receivals of taxable wool, by state	14

LIVESTOCK SLAUGHTERED(a), Australia: All Series

Quarter	Bulls, bullocks and steers	Cows and heifers	Cattle (excluding calves)	Calves	Sheep	Lambs	Pigs	Chickens(b)
	'000	'000	'000	'000	'000	'000	'000	'000
ORIGINAL								
2008								
June	1 079.5	1 075.9	2 155.3	208.3	2 912.0	5 022.4	1 282.3	114 140.7
September	1 051.6	955.6	2 007.2	370.7	2 511.7	4 653.9	1 154.6	115 380.7
December	1 028.8	960.3	1 989.1	140.7	3 184.1	5 652.6	1 141.5	121 394.3
2009								
March	951.6	952.7	1 904.3	106.2	3 157.7	5 310.1	1 067.6	119 183.8
June	936.3	1 053.1	1 989.5	194.8	2 428.5	5 150.5	1 158.1	118 850.7
September	1 061.9	968.2	2 030.2	344.4	2 028.5	5 118.1	1 157.5	112 897.9
SEASONALLY ADJUSTED								
2008								
June	1 085.7	969.5	2 055.2	209.6	3 164.4	4 999.2	1 242.8	115 822.3
September	1 024.0	974.8	1 998.9	206.0	3 110.8	4 915.5	1 148.6	116 475.3
December	992.7	997.2	1 989.9	195.8	2 823.5	5 356.1	1 150.1	117 992.0
2009								
March	987.6	983.9	1 971.4	204.7	2 755.9	5 273.2	1 100.4	119 867.6
June	963.1	969.8	1 932.8	201.8	2 642.7	5 207.0	1 122.5	120 525.8
September	1 034.3	984.8	2 019.1	191.6	2 514.3	5 397.5	1 151.0	113 980.9
TREND								
2008								
June	1 040.2	955.6	1 995.8	202.3	3 105.6	4 985.8	1 234.6	114 976.8
September	1 030.4	979.2	2 009.6	202.9	3 050.0	5 052.9	1 173.4	116 521.9
December	1 002.2	988.8	1 991.0	203.0	2 906.6	5 188.6	1 130.0	118 678.6
2009								
March	981.7	984.0	1 965.7	201.0	2 747.5	5 271.4	1 119.1	119 317.4
June	989.4	979.7	1 969.1	199.2	2 629.0	5 304.6	1 124.6	118 511.9
September	1 006.2	976.5	1 982.7	196.3	2 534.0	5 313.0	1 135.2	116 598.8

r revised

(a) For human consumption. Refer to paragraph 7 in the Explanatory Notes.

(b) Excludes Tasmania, Northern Territory and the Australian Capital Territory.

Quarter	RED MEAT(a)						Chicken	Whole milk	Brokers and dealers
	Beef	Veal	Mutton	Lamb	Pig meat	Total red meat	meat(b)(c)	intake by factories(d)	receivals of taxable wool(e)
	tonnes	tonnes	tonnes	tonnes	tonnes	tonnes	tonnes	ML	tonnes
ORIGINAL									
2008									
June	576 336	6 807	59 803	102 860	93 013	838 819	199 020	1 797	82 044
September	538 945	9 473	53 017	91 360	83 093	775 887	204 359	2 341	100 421
December	533 421	5 443	68 978	113 698	80 924	802 464	209 611	3 098	101 264
2009									
March	517 143	5 538	64 962	111 218	76 043	774 904	208 725	2 153	93 538
June	530 661	7 286	48 487	106 668	83 897	776 999	209 761	1 797	75 378
September	550 015	12 671	43 981	103 932	84 650	795 250	203 116	nya	86 170
SEASONALLY ADJUSTED									
2008									
June	555 662	6 810	67 841	102 613	89 198	822 123	199 447	2 383	98 006
September	533 791	6 452	64 801	98 395	81 824	785 264	205 906	2 359	96 771
December	532 083	6 623	59 112	108 003	82 550	788 370	206 395	2 339	89 862
2009									
March	529 719	7 570	57 257	108 967	79 063	782 577	210 250	2 336	92 908
June	525 080	7 482	55 101	107 108	80 520	775 292	209 885	2 360	90 106
September	544 305	8 584	53 750	112 145	83 348	802 133	204 679	nya	83 353
TREND									
2008									
June	536 443	6 375	66 502	101 688	88 836	799 844	199 560	2 344	98 045
September	538 626	6 545	64 193	101 893	83 969	795 225	203 648	2 361	94 958
December	533 432	6 837	60 473	105 102	80 830	786 674	208 019	2 349	93 082
2009									
March	528 658	7 252	57 203	107 867	80 319	781 300	209 074	2 343	91 067
June	531 920	7 815	55 141	109 579	80 960	785 415	208 486	2 349	88 660
September	536 683	8 336	53 783	110 254	81 944	791 000	207 071	nya	86 168

nya not yet available

r revised

(a) Carcass weight excluding offal. Refer to paragraphs 5 and 6 in the Explanatory Notes.

(b) Excludes Tasmania, Northern Territory and the Australian Capital Territory.

(c) Dressed weight of whole birds, pieces and giblets.

(d) Original data sourced from Dairy Australia. Includes whole milk equivalent of farm cream intake.

(e) Taxable receivals only. Refer to paragraphs 21 and 22 in the Explanatory Notes.

EXPORTS OF FRESH, CHILLED, FROZEN AND PROCESSED MEAT(a)(b), Australia: **Original**

Period	FRESH, CHILLED OR FROZEN MEAT									PROCESSED MEAT	
	Beef bone-in(c)	Beef bone-out(c)	Veal bone-in	Veal bone-out	Mutton bone-in	Mutton bone-out	Lamb bone-in	Lamb bone-out	Pork	Bacon and ham(d)	Canned meat(e)
	tonnes	tonnes	tonnes	tonnes	tonnes	tonnes	tonnes	tonnes	tonnes	tonnes	tonnes
2006-07	52 389	971 531	3 753	5 792	124 851	42 826	127 491	29 042	41 313	550	16 051
2007-08	57 199	917 494	3 704	5 049	119 496	43 827	134 101	32 499	39 138	772	12 493
2008-09	r47 925	r954 492	r4 102	r4 594	r107 004	r44 119	r131 144	r31 254	r32 258	r464	r12 852
2008											
June	17 919	255 221	930	988	28 276	11 982	30 555	8 291	9 568	239	3 432
September	12 983	238 419	1 397	1 801	20 540	8 443	25 605	5 047	8 953	266	3 287
December	12 956	258 168	991	1 385	32 180	13 617	37 673	9 124	8 111	101	3 381
2009											
March	9 708	216 388	645	570	29 110	r12 498	r34 177	8 807	7 528	64	2 940
June	r12 279	r241 517	r1 069	r839	r25 174	9 561	r33 688	r8 275	r7 666	r33	r3 243
September	12 044	231 898	1 500	1 246	18 791	6 864	31 110	6 865	7 645	57	3 529

r revised

(a) Compiled from Australian Customs Service data. Refer to paragraph 11 in the Explanatory Notes.

(b) Export data may be subject to revision.

(c) Includes buffalo meat.

(d) Cured carcass weight, and stated net weight of packs of canned bacon and ham. Refer to paragraph 13 in the Explanatory Notes.

(e) Canned meat excludes bacon and ham. Refer to paragraph 14 in the Explanatory Notes.

EXPORTS OF LIVE SHEEP AND CATTLE(a), Australia: **Original**

<i>Period</i>	<i>Number</i>	<i>Gross weight</i>	<i>Gross value</i>	<i>Unit value(b)</i>
	'000	'000 tonnes	\$'000	\$
.....				
SHEEP				
2006-07	4 137.9	198.8	288 697	69.77
2007-08	4 069.0	197.0	286 442	70.40
2008-09	r4 063.9	199.0	r339 083	83.44
2008				
June	886.9	42.9	64 985	73.27
September	1 099.1	52.8	86 570	78.77
December	1 234.0	60.5	101 446	82.21
2009				
March	852.8	43.0	73 316	85.97
June	r878.1	42.8	r77 751	88.55
September	801.8	38.7	76 827	95.82
.....				
CATTLE				
2006-07	638.0	216.1	437 427	685.58
2007-08	713.3	241.2	450 511	631.63
2008-09	r856.0	r285.0	r558 695	r652.67
2008				
June	178.2	61.9	109 111	612.23
September	227.1	75.1	140 044	616.58
December	226.8	71.5	162 162	714.97
2009				
March	170.3	57.8	114 672	673.49
June	r231.8	r80.5	r141 817	r611.80
September	253.4	84.7	160 020	631.50

r revised

(a) Export data may be subject to revision.

(b) Gross value divided by the number of animals exported.

WHOLE MILK INTAKE, by Factories(a): All Series

	New South Wales(b)	Victoria	Queensland	South Australia(c)	Western Australia	Tasmania	Australia
Quarter	ML	ML	ML	ML	ML	ML	ML
ORIGINAL							
2008							
March	244	1 374	116	143	69	172	2 118
June	236	1 117	110	138	76	120	1 797
September	271	1 576	128	149	86	130	2 341
December	296	2 112	138	185	100	268	3 098
2009							
March	251	1 364	125	148	78	186	2 153
June	247	1 083	120	145	77	124	1 797
SEASONALLY ADJUSTED							
2008							
March	260	1 520	122	149	78	163	2 290
June	259	1 591	121	154	81	177	2 383
September	263	1 552	122	157	83	182	2 359
December	264	1 531	127	156	88	173	2 339
2009							
March	267	1 517	131	157	87	176	2 336
June	271	1 533	132	158	83	183	2 360
TREND							
2008							
March	260	1 532	121	151	78	168	2 310
June	260	1 556	122	153	80	174	2 344
September	262	1 559	123	155	84	177	2 361
December	265	1 538	127	157	86	177	2 349
2009							
March	267	1 524	130	157	86	177	2 343
June	270	1 524	133	158	85	179	2 349

(a) Includes whole milk equivalent of farm cream intake.
Refer to paragraphs 18 and 19 in the Explanatory
Notes.

(b) Includes data for the Australian Capital Territory.

(c) Includes data for the Northern Territory.

Source: Original series data from Dairy Australia.

MARKET MILK SALES, by Factories(a): All Series

	<i>New South Wales(b)</i>	<i>Victoria</i>	<i>Queensland</i>	<i>South Australia(c)</i>	<i>Western Australia</i>	<i>Tasmania</i>	Australia
<i>Quarter</i>	ML	ML	ML	ML	ML	ML	ML

ORIGINAL

2008

March	167	129	124	50	59	14	542
June	173	135	127	52	60	14	561
September	175	135	129	53	62	14	568
December	172	132	125	52	61	14	556

2009

March	172	131	127	51	59	14	553
June	176	136	128	53	59	14	567

SEASONALLY ADJUSTED

2008

March	170	133	125	52	60	14	554
June	171	132	127	51	60	14	556
September	172	133	126	51	61	14	557
December	174	133	126	52	62	14	561

2009

March	175	133	129	52	60	14	563
June	175	135	129	53	59	14	564

TREND

2008

March	170	131	126	52	60	14	553
June	171	132	126	51	61	14	556
September	172	133	126	51	61	14	558
December	174	133	127	52	61	14	560

2009

March	175	134	128	52	60	14	562
June	175	134	129	53	59	14	564

(a) Includes white, flavoured, high and low fat milk and UHT milk. Refer to paragraphs 18 and 20 in the Explanatory Notes.

(b) Includes data for the Australian Capital Territory.

(c) Includes data for the Northern Territory.

Source: Original series data from Dairy Australia.

BROKERS AND DEALERS RECEIVALS OF TAXABLE WOOL(a): All Series

Quarter	New South Wales	Victoria	Queensland	South Australia	Western Australia	Tasmania	Australia	% of total received by brokers
	tonnes	tonnes	tonnes	tonnes	tonnes	tonnes	tonnes	%
ORIGINAL								
2008								
June	29 094	21 438	3 370	11 927	13 771	2 443	82 044	79.3
September	35 673	22 069	3 395	16 466	20 177	2 642	100 421	83.9
December	31 407	27 368	2 185	14 231	23 437	2 636	101 264	77.4
2009								
March	27 243	22 865	1 886	12 232	27 767	1 545	93 538	79.3
June	25 102	18 833	3 363	10 893	14 767	2 419	75 378	77.3
September	32 534	19 880	3 072	12 344	15 585	2 756	86 170	82.5
SEASONALLY ADJUSTED								
2008								
June	33 042	26 150	2 827	14 323	19 128	2 535	98 006	..
September	30 835	23 377	2 628	15 653	21 941	2 336	96 771	..
December	29 463	22 358	2 728	12 106	20 966	2 242	89 862	..
2009								
March	30 347	22 685	2 632	12 760	22 294	2 189	92 908	..
June	28 450	22 679	2 787	13 217	20 511	2 463	90 106	..
September	28 209	21 289	2 409	11 713	17 268	2 464	83 353	..
TREND								
2008								
June	32 476	24 904	2 897	15 091	20 285	2 392	98 045	..
September	31 265	23 734	2 669	14 140	20 769	2 382	94 958	..
December	30 112	22 920	2 678	13 345	21 764	2 263	93 082	..
2009								
March	29 444	22 449	2 687	12 780	21 428	2 279	91 067	..
June	28 884	22 230	2 638	12 461	20 072	2 375	88 660	..
September	28 364	21 853	2 549	12 366	18 577	2 459	86 168	..

.. not applicable

(a) Taxable receivals only. Refer to paragraphs 21 and 22 in the Explanatory Notes.

EXPLANATORY NOTES

INTRODUCTION

1 This publication contains information on livestock slaughterings (including chickens), meat production, exports of live sheep and cattle, exports of fresh, chilled, frozen and processed meat, whole milk intake by factories, market milk sales by factories and receivals of taxable wool by wool brokers and dealers.

2 Data in this publication have been revised where necessary and as a consequence may not agree with similar data shown in previous publications.

3 Where figures have been rounded, discrepancies may occur between sums of the component items and totals.

4 Unless otherwise indicated, Australian totals include data for all states/territories.

LIVESTOCK SLAUGHTERINGS AND MEAT PRODUCTION

5 The statistics on slaughterings for red meat production are based on a monthly collection from abattoirs and other major slaughtering establishments and include estimates of animals slaughtered on farms, by country butchers and other small slaughtering establishments.

6 Red meat is shown in carcass weight and excludes offal.

7 Care should be taken when using this information as the data only relate to slaughterings for human consumption and do not include animals condemned, slaughtered for pet food or those killed for boiling down.

8 Statistics for poultry slaughterings and chicken meat produced have been compiled from quarterly returns supplied by commercial poultry slaughtering establishments and comprise boilers, fryers and roasters. Many small producers are excluded from the collection; however, the statistics represent a high level of coverage.

9 Chicken meat is shown in dressed weight of whole birds, pieces and giblets.

10 Details about unpublished slaughterings and meat production statistics can be found in the Livestock Slaughtering Collection brief on the Australian Bureau of Statistics (ABS) website and also are available on request. Inquiries should be made to the *National Information and Referral Service* on 1300 135 070.

EXPORTS OF FRESH, CHILLED, FROZEN AND PROCESSED MEAT

11 International trade statistics are compiled by the ABS from information submitted to the Australian Customs Service by exporters and importers or their agents. Factors are applied to beef, veal, mutton and lamb bone-out figures to calculate a derived bone-in carcass weight. The derived bone-in carcass weights are then added to bone-in figures to calculate total exports in carcass weight. The factor for beef and veal is 1.5 and for mutton and lamb, 2.0. This information is sourced from the Australian Department of Agriculture, Fisheries and Forestry.

12 Beef also includes buffalo meat.

13 Bacon and ham shown is the cured carcass weight of smoked or cooked bacon and ham. It also includes the stated net weight of packs of canned bacon and ham.

14 Canned meat is shown as the canned weight and excludes canned bacon and ham.

LIVE SHEEP AND CATTLE EXPORTS

15 Sheep and cattle exported for breeding are excluded.

16 The unit value is obtained by dividing the gross value by the number of animals exported.

17 The graphs of livestock exports present quarterly original estimates for at least the last five years for the major commodities. These graphs highlight the major movements in the estimates over that period.

MILK

18 Milk data collected by Dairy Australia. Data for the latest quarter are not yet available.

EXPLANATORY NOTES *continued*

MILK *continued*

19 Whole milk intake by factories includes the whole milk equivalent of farm cream intake.

20 Market sales includes white, flavoured, high and low fat milk and ultra heat treatment (UHT) milk. Interstate transfers of UHT milk have been included in their state of destination. UHT milk is milk that is heated to high temperatures to produce a milk which does not require refrigeration for a sustained period of time when unopened.

WOOL RECEIVALS

21 Wool receivals refers to the amount of taxable wool received by brokers and purchased by dealers from wool producers. It excludes wool received by brokers on which tax has already been paid by other dealers (private buyers) or brokers.

22 Data are based on the state in which wool has been received, and do not necessarily reflect the production of wool in that state.

SEASONAL ADJUSTMENT

23 Seasonal adjustment is a means of removing the estimated effects of normal seasonal variation from the series so that the effects of other influences can be more clearly recognised.

24 In the seasonal adjustment of the livestock estimates, account has been taken of both normal seasonal factors and 'trading day' effects, where significant. Seasonal adjustment does not remove from the series the effect of irregular influences (e.g. abnormal weather, industrial disputes).

25 The state component series has been seasonally adjusted independently. Therefore, the adjusted components may not add to the Australian group totals.

26 In this publication, the seasonally adjusted estimates are produced by the concurrent seasonal adjustment method which takes account of the latest available original estimates. This method improves the estimation of seasonal factors and, therefore, the seasonally adjusted and trend estimates for the current and previous months. As a result of this improvement, revisions to the seasonally adjusted and trend estimates will be observed for recent periods. A more detailed review is conducted annually prior to the September release, using data up to and including the August release.

27 For further information, see *Time Series Analysis Frequently Asked Questions, 2003* (cat. no. 1346.0.55.002).

28 From September 2007, improved methods of producing seasonally adjusted estimates, focused on the application of Autoregressive Integrated Moving Average (ARIMA) modelling techniques, were implemented. The ARIMA modelling technique can be used to extend original estimates beyond the end of a time series.

29 For further information on ARIMA modelling, see the feature article '*Use of ARIMA modelling to reduce revisions*' in *Australian Economic Indicators, Oct 2004* (cat. no. 1350.0).

TREND ESTIMATES

30 The graphs of livestock slaughtered, meat production and livestock products present quarterly trend estimates for at least the last five years for the major commodities. These graphs highlight the major movements in the estimates over that period.

31 A trend estimate is obtained by reducing the irregular component in the seasonally adjusted series. For quarterly data, trend estimates are derived by applying a 7-term Henderson moving average to the seasonally adjusted series. Revisions of trend estimates will also occur with revisions to the original data and re-estimation of seasonal factors.

32 The state component series has been adjusted independently. Therefore, the adjusted components may not add to the Australian group totals.

EXPLANATORY NOTES *continued*

TREND ESTIMATES *continued*

33 For further information, see *Information Paper: A Guide to Interpreting Time Series - Monitoring Trends, 2003* (cat. no. 1349.0).

RELATED PUBLICATIONS

34 Other ABS publications containing livestock data include:

- *Agricultural Commodities, Australia* (cat. no. 7121.0)
- *Agricultural Commodities: Small Area Data, Australia* (cat. no. 7125.0)
- *Livestock and Meat, Australia* (cat. no. 7218.0.55.001)
- *Value of Agricultural Commodities Produced, Australia* (cat. no. 7503.0)

35 Current publications and other products released by the ABS are listed under the Statistics and Themes pages on the ABS website <<http://www.abs.gov.au>>. The ABS also issues a daily Release Advice on the website which details products to be released in the week ahead.

GENERAL ACKNOWLEDGMENT

36 ABS publications draw extensively on information provided freely by individuals, businesses, governments and other organisations. Their continued cooperation is very much appreciated. Without it, the wide range of statistics published by the ABS would not be available. Information received by the ABS is treated in strict confidence as required by the *Census and Statistics Act 1905*.

FOR MORE INFORMATION . . .

INTERNET **www.abs.gov.au** the ABS website is the best place for data from our publications and information about the ABS.

INFORMATION AND REFERRAL SERVICE

Our consultants can help you access the full range of information published by the ABS that is available free of charge from our website. Information tailored to your needs can also be requested as a 'user pays' service. Specialists are on hand to help you with analytical or methodological advice.

PHONE 1300 135 070

EMAIL client.services@abs.gov.au

FAX 1300 135 211

POST Client Services, ABS, GPO Box 796, Sydney NSW 2001

FREE ACCESS TO STATISTICS

All statistics on the ABS website can be downloaded free of charge.

WEB ADDRESS **www.abs.gov.au**